



**Tideway**

**King Edward Memorial Park Foreshore  
Community Liaison Working Group  
14 March 2018**

# Staff

## Tideway

- |                        |                                   |
|------------------------|-----------------------------------|
| • <b>Jeff Alchin</b>   | <b>Project Manager</b>            |
| • <b>Natasha Rudat</b> | <b>Communications Lead</b>        |
| • <b>Annie Lennox</b>  | <b>Architecture and Landscape</b> |

## CVB

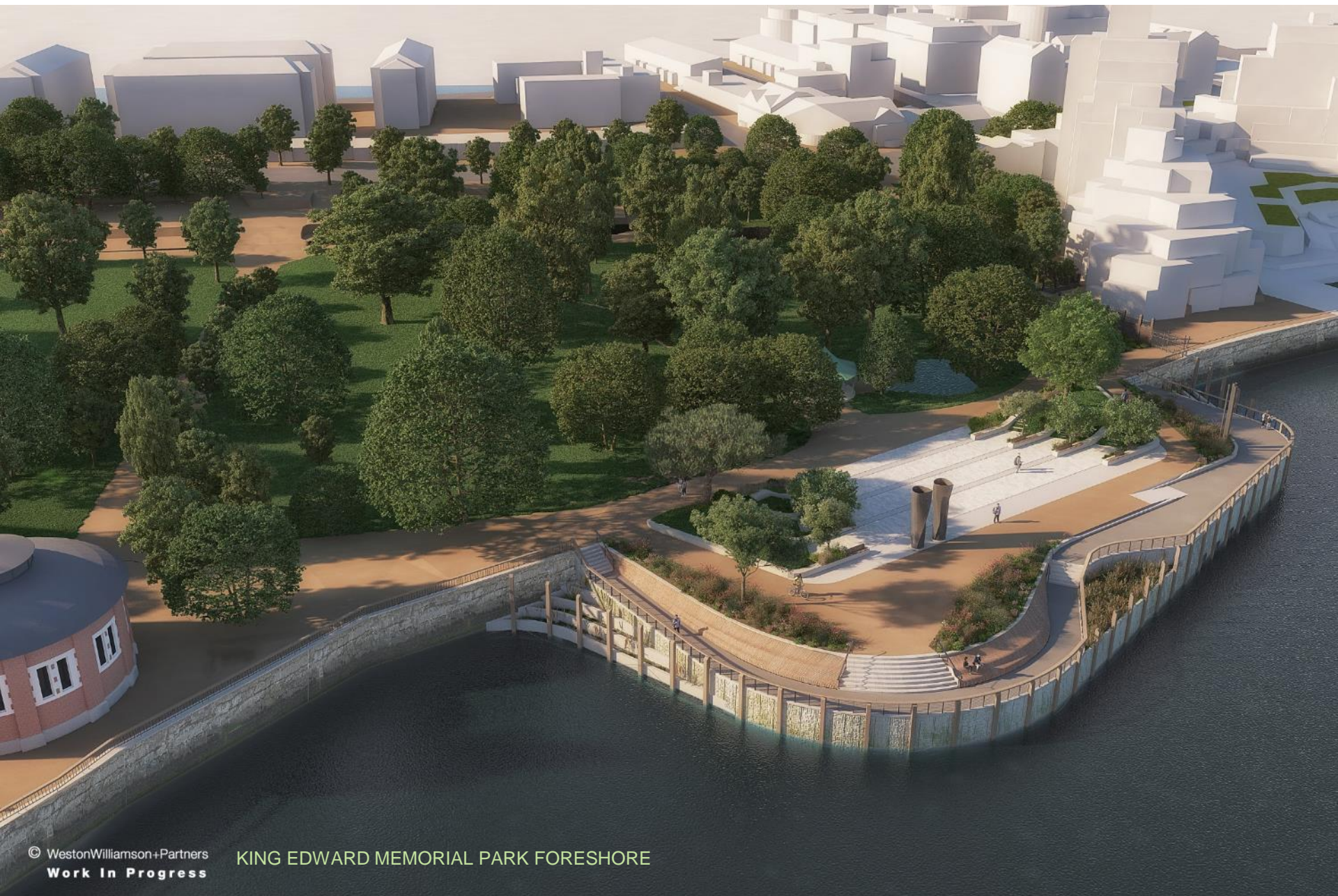
- |                        |                                    |
|------------------------|------------------------------------|
| • <b>Charlie Louët</b> | <b>Site manager</b>                |
| • <b>Jaga Rogalska</b> | <b>Consents Manager</b>            |
| • <b>Eoin Holland</b>  | <b>Asst. Consents Manager</b>      |
| • <b>June Saunders</b> | <b>Community Relations Officer</b> |

# CONTENTS

- **Vent Column Design**
- **Legacy**
- **Progress report**
- **Upcoming works**

# Vent Columns Design progress

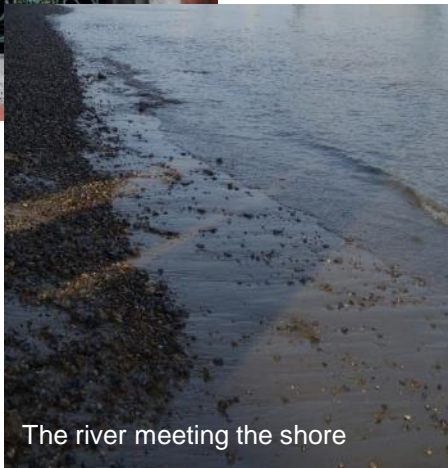






# Vortex Ventilation Columns

## Pattern development



The river meeting the shore

Pattern of the foreshore meeting the river with strong simple line work inspired by the Rotunda grilles

- The Rotherhithe Rotunda airshaft grilles is the main inspiration for the pattern of the ventilation columns
- The pattern forms a cross section through the sea bed with
  - Rocks
  - Sand and
  - Waves
- Symbolising the place where the river meets the shore
- The pattern will be cast in, forming unique objects to King Edward memorial Park
- The pattern will be at the lower part of both columns, allowing people to touch and feel it





**Cast Iron Half Height Pattern**





© Weston Williamson & Partners  
Work In Progress

## KING EDWARD MEMORIAL PARK, VIEW FROM THE PARK

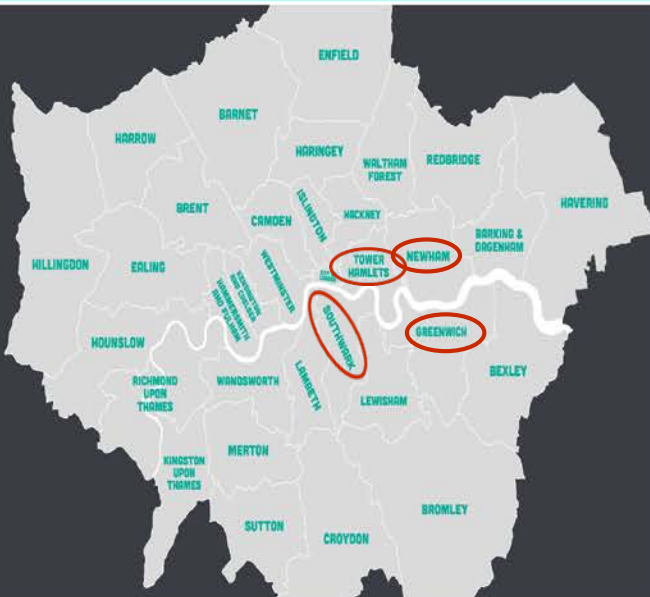


# Legacy

# CVB COMMUNITY INVESTMENT IN FEBRUARY 2018

LONDON  
BOROUGHS  
WE'VE  
SUPPORTED

4



NUMBER OF HOURS VOLUNTEERED

98



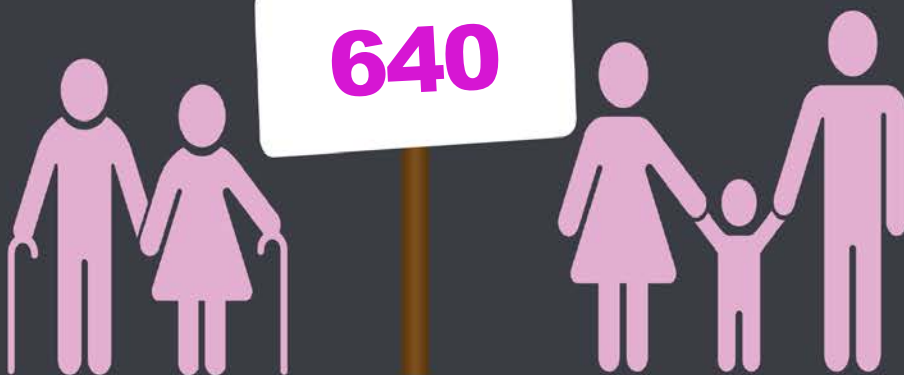
NUMBER OF PEOPLE VOLUNTEERED

38



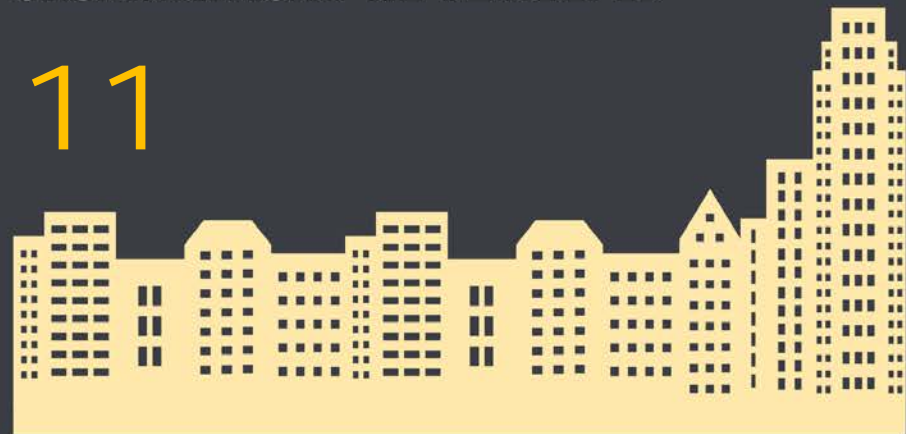
NUMBER OF PEOPLE WE SUPPORTED

640



ORGANISATIONS WE'VE HELPED

11





# 'People from Tower Hamlets can do whatever they want'

YOUNG East Enders are helping to build London's future thanks to the work of the council's employment and training team.

Tower Hamlets has one of the youngest populations in the UK. As such, the council wants to maximize the benefits of this wave of construction for local youngsters looking to take their next step on the career ladder, through its flagship employment scheme, WorkPath.

The WorkPath team is working closely with the construction industry to broker apprenticeship places and to make the borough's young people aware of job opportunities as they come up. For 21-year-old Abdul Sadiq, from Whitechapel, meeting with the WorkPath team opened the door to a career he had never even considered



Abdul Sadiq has seized the opportunity to become an apprentice through the WorkPath scheme

## Get in touch

7364 0626

[workpath@towerhamlets.gov.uk](mailto:workpath@towerhamlets.gov.uk)

[towerhamlets.gov.uk/workpath](https://towerhamlets.gov.uk/workpath)



## Drop by for a chat

Informal sessions, 10am-4pm Tues & Thurs.

WorkPath Employment and Skill Centre,

55 Upper Bank Street,

Canary Wharf, E14.

The former cinema host is now working as an accounts apprentice on the Thames Tideway Tunnel, one of London's biggest infrastructure projects.

Abdul said: "I'm proof that people from Tower Hamlets can do whatever they want if they work hard enough. "In this role, I get to be hands-on with all the figures. "I always enjoyed maths at school so I really couldn't wait to take my understanding to the next level "I would love to become a finance manager one day and it all starts from the position I'm in now. "My career journey has only just begun."

While Abdul works in the back office at a construction firm, many of the jobs secured by WorkPath's young clients are right on the front-line. But gone are the days when those roles were dominated solely by male employees – in 2018 there are a growing number of young women taking a lead.

Article from



OUREASTEND

ISSUE EIGHT // MARCH 2018

# Invitation to CLWG to join us at KEMPF for Foreshore clean up



On 5 March, CVB and Tideway staff volunteered to clear plastic waste which was embedded in the foreshore of the Isle of Dogs. This is part of our regular volunteering partnership with Thames21, a charity which aims to 'reconnect people to nature by helping them enjoy, protect and enhance their local rivers.'



*This photo shows the shocking amount of plastic they found at Isle of Dogs*

**If you would like to volunteer to help at a KEMP Foreshore clear up**

**– please contact: [communityrelations@tideway-east.london](mailto:communityrelations@tideway-east.london)**



# Progress report



**Playground**



# Playground





# Public interface in park





# Chestnut fencing in park







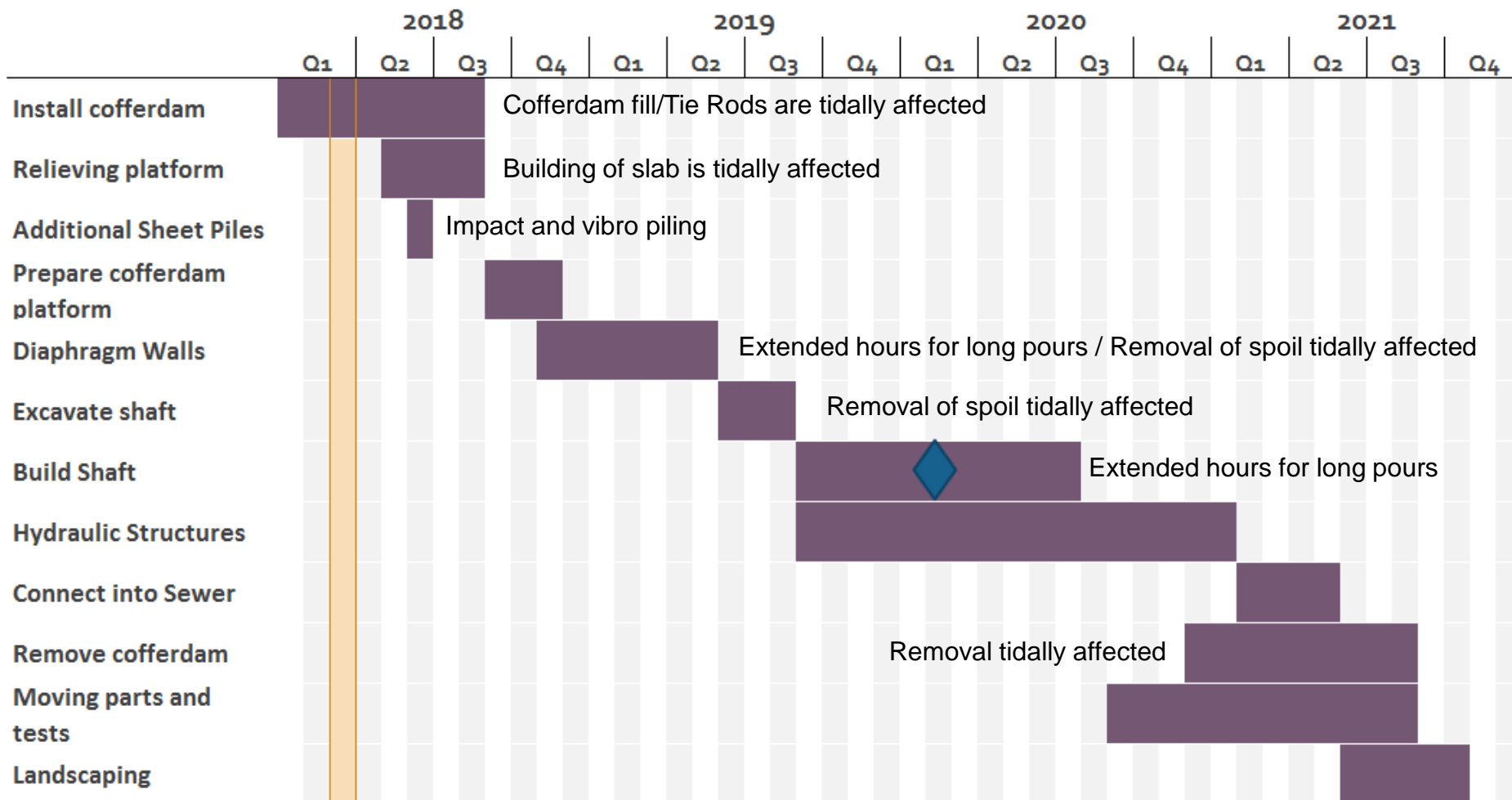
# Cofferdam - Backfill



# Upcoming work



# High level programme of works

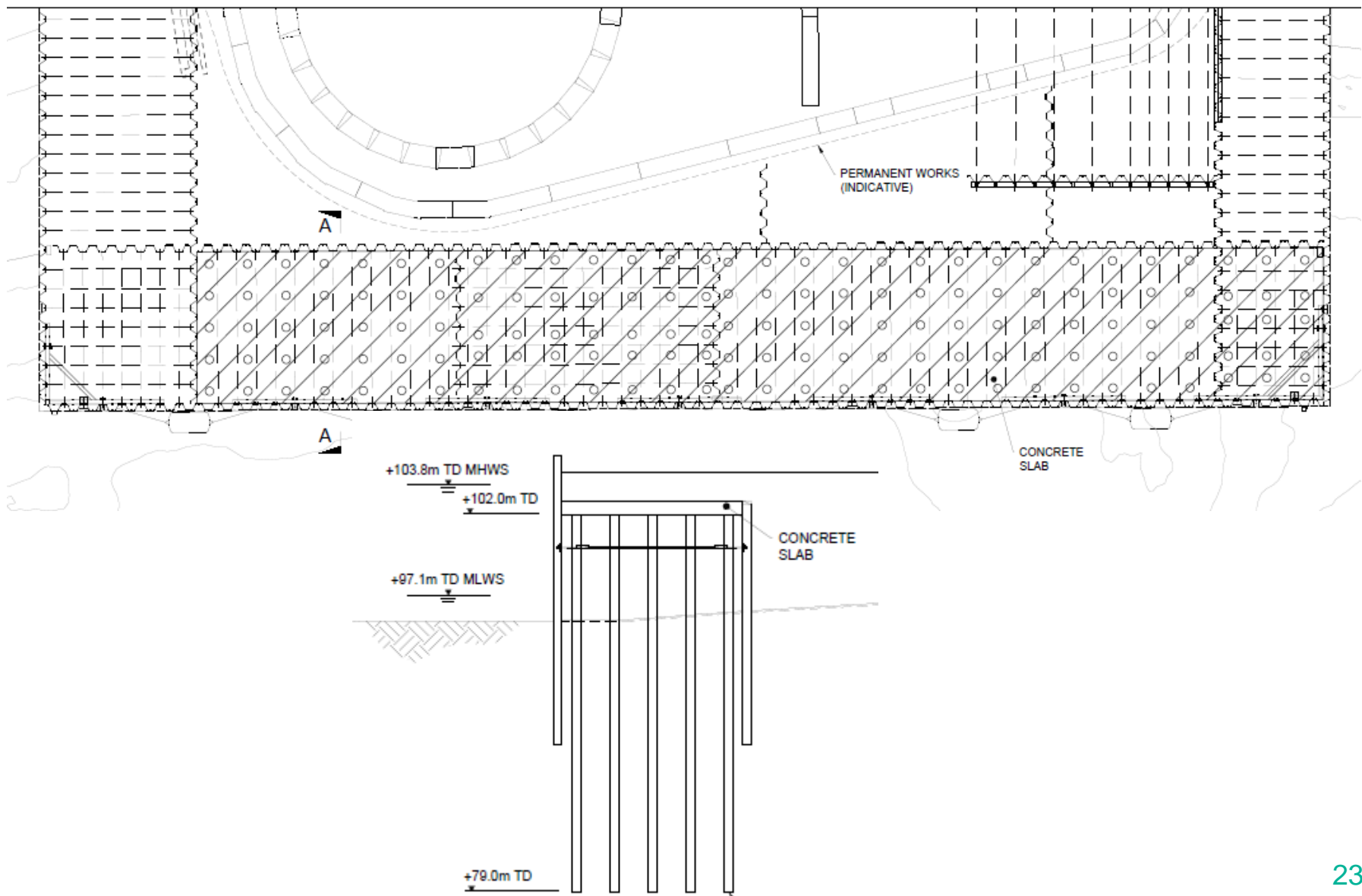


# Upcoming works

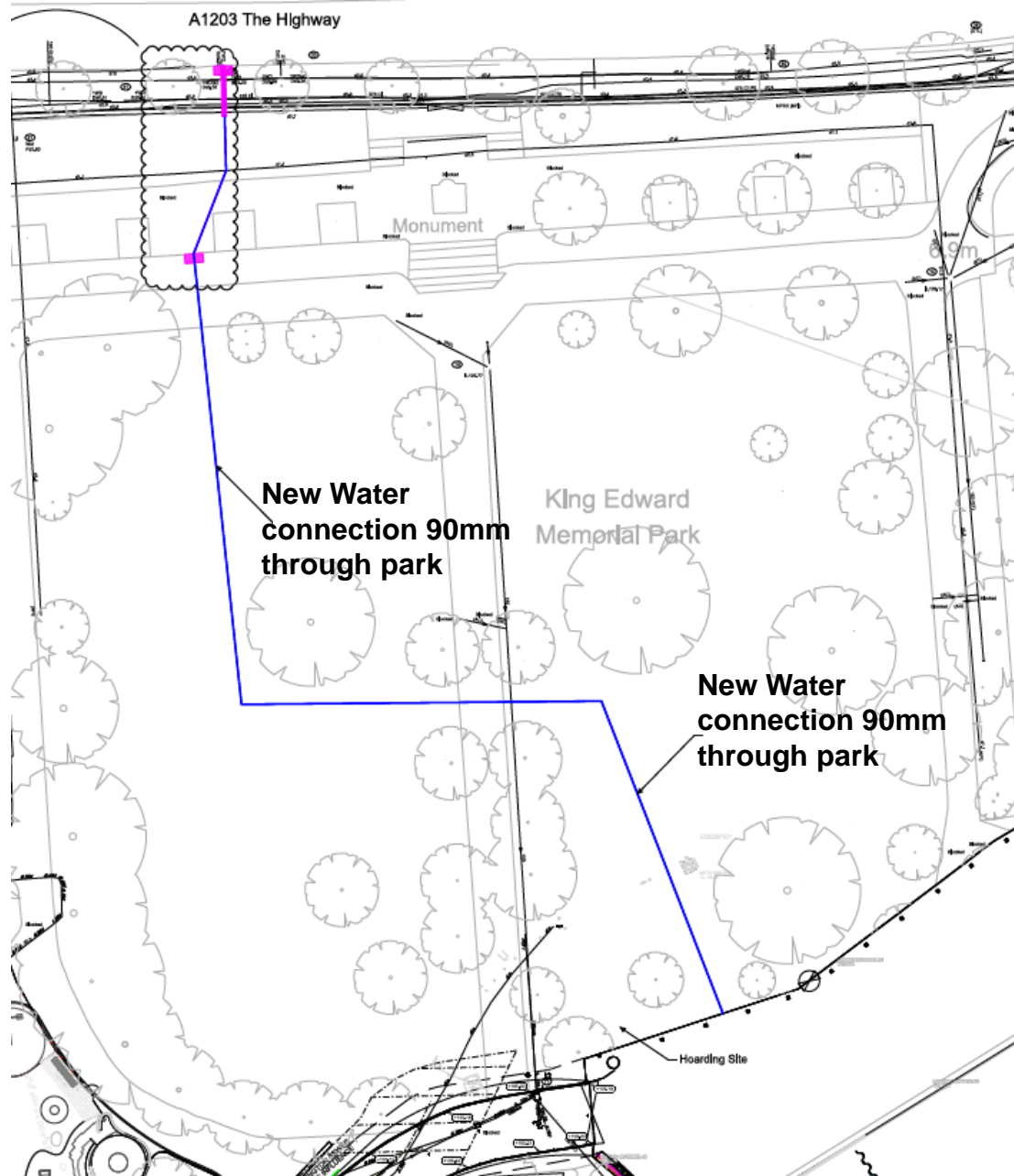
- Tennis Court lines and nets
- Final works to site entrance ongoing (permanent gate)
- Carry on cofferdam backfill and tie rods (tidally affected works)
- Concrete piles to build a relieving platform within the cofferdam. Start in April
- Additional line of sheet piles within the sewer diversion. Start in May.
- Silt pumping to be carried out during week-end maintenance periods going forward.
- Cofferdam works only to carry on during Easter:
  - Tie rods and backfill
  - Silt removal
  - Tie-in to river wall



# Cofferdam relieving platform



# Water Connection



# Relocation of Hoarding line to deter anti-social behaviour







**THANK YOU**

**King Edward Memorial Park Foreshore  
Community Liaison Working Group  
25 January 2018**