

INFORMATION SHEET



2120-TDWAY-KEMPF-150-ZZ-CO-700007

APRIL 2018



KING EDWARD MEMORIAL PARK FORESHORE

NEW WATER PIPE INSTALLATION MAY 2018

A new water connection is required for our construction site which can supply the large flow rate required for our works.

This water pipe will be laid within a trench through the park. It will be connected to the existing Thames Water Network via a water main situated in The Highway.

In advance of the new pipes for the water being installed, we will be digging 4 trial holes to sample the soil along the route of the pipe. This is to ensure the soil is non-hazardous and can immediately be reused to fill the excavated trenches. We will take the soil samples using hand tools only, along the proposed route of the pipe over a period of no longer than 2 days, beginning on 30 April.

Soil testing takes up to 5 days, so by carrying out sampling ahead of the installation of the pipe, we are preventing any delay in backfilling the dug trenches to minimise the disruption for park users.

Once the soil samples have been analysed and approved, we are planning to install the pipe in sections from The Highway, across the park and outside our main construction site. The route has been planned in agreement with Thames Water and LB Tower Hamlets and will avoid the need for removing any additional trees. This work is scheduled to begin late May 2018 and will take approximately 4 weeks to complete.

The work will be carried out in sections, within fenced off areas to keep disruption to the park to a minimum. Where unavoidable, pedestrian routes will be redirected for short periods of time to ensure the safety of the public.

If you wish to receive regular email updates on our work you can sign up to receive these by contacting us through the contact details below.

KEY INFO

WHAT TO EXPECT

- Fenced off areas within the park
- Some pedestrian routes diverted

24 HOUR HELPDESK 08000 30 80 80
helpdesk@tideway.london | Freepost TIDEWAY
www.tideway.london

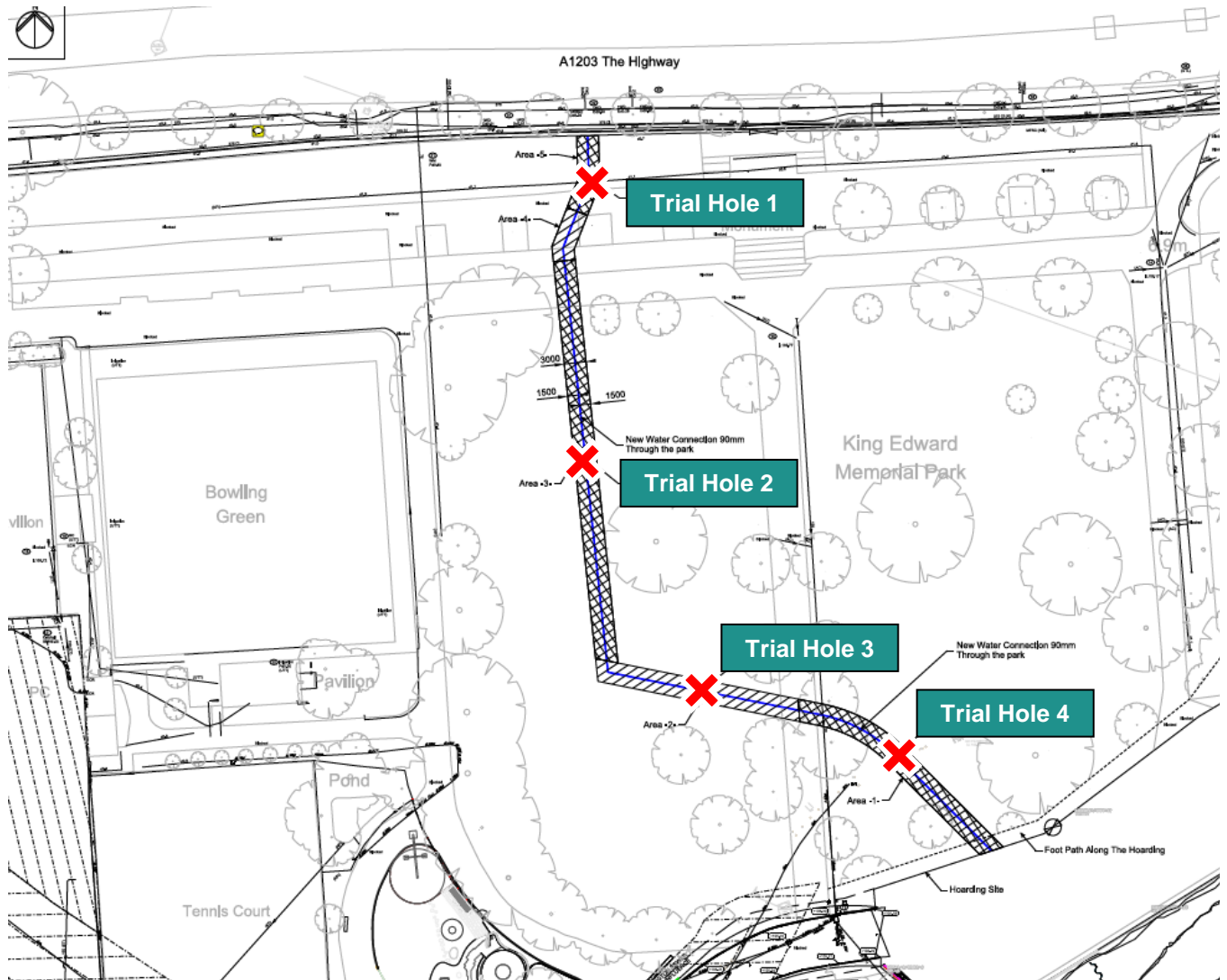


INFORMATION SHEET



2120-TDWAY-KEMPF-150-ZZ-CO-700007

APRIL 2018



NEW WATER PIPE INSTALLATION - MAY 2018

KEY INFO

WHAT TO EXPECT

- Fenced off areas within the park
- Some pedestrian routes diverted

24 HOUR HELPDESK 08000 30 80 80
helpdesk@tideway.london | Freepost TIDEWAY
www.tideway.london

